

castus[®] 

ALPHA PORT SQ

The castus alpha Port is installed into the wall of an isolator and serves as a lock to load or unload components into or from the isolator without contamination.

The patented safety interlock system guarantees a high protection of operator and product. The alpha door can only be opened when a beta Part is docked correctly. On the other hand, the beta Part cannot be undocked, if the alpha door is open.

When space at the workplace is limited, the alpha Port can be equipped with a removable door. After having opened the door by only 20°, it can be completely unhinged and placed in the isolator.

Art.no.:	76000073
Description:	alpha Port 105 SQ
Size:	105
Weight:	7,5 kg
Material flange:	316L
Material seal:	silicone FDA-conform optional EPDM
Material door:	PE-HD optional: PE-EL or 316L
Thread diameter (A):	Ø 155 mm
Cutout on isolator (A):	Ø 156 mm +/-1
Interfering contour open door (C):	R 175 mm
Interfering contour lid (B):	274 mm
Outer diameter alpha Port (D):	Ø 225 mm
Interfering contour rotary lever lock (E):	R 130 mm
Height alpha Port (F):	83 mm
Interf. contour alpha with vertical door (H):	196 mm
Max. thickness of isolator wall:	8 mm (others on demand)
incl. castus standard documentation	

Art.no.:	76000074
Description:	alpha Port 190 SQ
Size:	190
Weight:	14,5 kg
Material flange:	316L
Material seal:	silicone FDA-conform optional EPDM
Material door:	PE-HD optional: PE-EL or 316L
Thread diameter (A):	Ø 266 mm
Cutout on isolator (A):	Ø 268 mm +/-1
Interfering contour open door (C):	R 267 mm
Interfering contour lid (B):	410 mm
Outer diameter alpha Port (D):	Ø 315 mm
Interfering contour rotary lever lock (E):	R 199 mm
Height alpha Port (F):	91 mm
Interf. contour alpha with vertical door (H):	288 mm
Max. thickness of isolator wall:	8 mm (others on demand)
incl. castus standard documentation	

Art.no.:	76000075
Description:	alpha Port 270 SQ
Size:	270
Weight:	19,3 kg
Material flange:	316L
Material seal:	silicone FDA-conform optional EPDM
Material door:	PE-HD optional: PE-EL or 316L
Thread diameter (A):	Ø 346 mm
Cutout on isolator (A):	Ø 348 mm +/-1
Interfering contour open door (C):	R 347 mm
Interfering contour lid (B):	529 mm
Outer diameter alpha Port (D):	Ø 400 mm
Interfering contour rotary lever lock (E):	R 239 mm
Height alpha Port (F):	91 mm
Interf. contour alpha with vertical door (H):	368 mm
Max. thickness of isolator wall:	8 mm (others on demand)
incl. castus standard documentation	

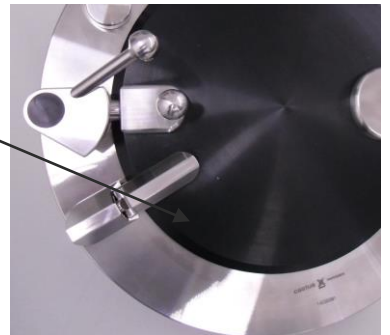
Art.no.:	76000076
Description:	alpha Port 350 SQ
Size:	350
Weight:	24 kg
Material flange:	316L
Material seal:	silicone FDA-conform optional EPDM
Material door:	PE-HD optional: PE-EL or 316L
Thread diameter (A):	Ø 426 mm
Cutout on isolator (A):	Ø 428 mm +/-1
Interfering contour open door (C):	R 426 mm
Interfering contour lid (B):	649 mm
Outer diameter alpha Port (D):	Ø 475 mm
Interfering contour rotary lever lock (E):	R 279 mm
Height alpha Port (F):	91 mm
Interf. contour alpha with vertical door (H):	447 mm
Max. thickness of isolator wall:	8 mm (others on demand)
incl. castus standard documentation	

OPTIONALS

Option: door 316L



Option: door PE-EL



Option: handles

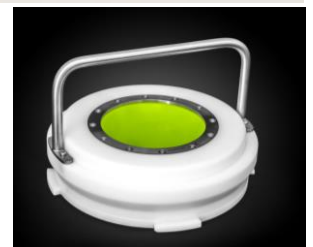


Option: removable door

When space at the workplace is limited, the alpha Port can be equipped with a removable door. After having opened the door by only 20°, it can be completely unhinged and placed in the isolator.



The beta False Container is an accessory to open the alpha Port during decontamination of the isolator. By this, the surface of the alpha seal can be sterilized safely.



OPTIONALS

Option: Flushfloor



info@netsteril.com
www.netsteril.com